



## TIPS TO PROTECT YOUR HOME AND PROPERTY

*Create a safe perimeter of at least 30 feet around your home:*

- Remove flammable materials such as gas, newspapers, wood, or rubbish piles
- Cut back any shrubs or trees growing near your house, including the roof
- Clean your roof, eaves, and gutters of leaves or other debris
- Use construction materials that are fire-resistant or non-combustible
- Landscape with less-flammable plants
- Keep your yard green and trimmed

***Be sure to have an EMERGENCY PLAN and ESCAPE ROUTES***



**“ Together Hawai’i ...  
We Can Prevent Wildfires! “**

*For more information contact:*

### **Firewise**

Denise Laitinen  
Hawai’i Firewise Community Liaison  
(808) 281-3497  
[www.firewise.org](http://www.firewise.org)

### **Honolulu Fire Department**

Fire Safety & Education Branch  
(808) 831-7784

### **State of Hawai’i**

**Division of Forestry & Wildlife**  
(808) 587-4173  
[www.dofaw.net](http://www.dofaw.net)

### **The Nature Conservancy of Hawai’i**

#### **O’ahu Program**

(808) 621-2008

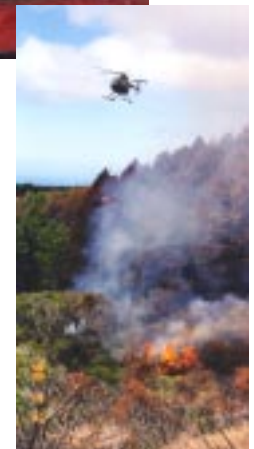
[www.nature.org/hawaii](http://www.nature.org/hawaii)

This brochure was made possible through the support of the U.S. Forest Service, the State of Hawai’i Division of Forestry & Wildlife, the Honolulu Fire Department, the Estate of James Campbell, and Wai’anae High School’s Hawaiian Studies Program.

*Photos courtesy of KGMB Television, the Honolulu Fire Department, Wai’anae High School’s Hawaiian Studies Program, and the Conservancy’s Moloka’i Field Office*



# Impacts of **WILDFIRES** on **Our Island Community**



# Prevent Wildfires... Because When You Play with Fire, WE ALL LOSE!

## OUR ISLAND COMMUNITY

*includes our neighborhoods where our families and friends live ...*



*... the mountains, forests, streams, beaches, reefs, and oceans ...*



*... and all the plants, animals, and living things in these areas*

## WILDFIRES

**Have devastating impacts on everyone & everything in our Island community**

- Threaten human lives and property, especially residents living in or near forests & undeveloped or unattended lands
- Put a strain on the limited resources of emergency response units (fire department, police, and ambulance)
- Cause erosion and damage to our forests, which are watersheds, the source of our fresh drinking water
- Are a major threat to native Hawaiian ecosystems and native species; other major threats include invasive non-native plants and animals
- Allow alien fire-prone weeds to spread quickly in burned areas
- Can affect Hawaiian cultural practices and customs due to the culture's close connection to nature
- Are at a high risk during prolonged drought and dry summer months
- Are caused by people accidentally or intentionally (arson) --- natural causes of fires (lava, lightning) are not common

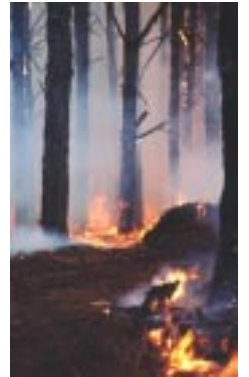
**WILDFIRES CAN BE PREVENTED!**

## WILDFIRE PREVENTION

Avoid playing with matches, lighters, fireworks (especially illegal aerials), or burning rubbish near dry grassy areas.

Do not build campfires in dry forest areas. If you must, always put out campfires properly.

Be on the lookout for people playing with fire or dumping rubbish --- dump sites create potentially dangerous areas full of flammable materials, chemicals, and toxins that are harmful to humans, plants, and wildlife.



***Call 911***  
**to report an emergency or dangerous situation**